



NASIGA s.r.o.

U Mototechny 107  
251 62 Tehovec  
Czech Republic

E-mail: [info@nasiga.com](mailto:info@nasiga.com)  
[www.nasiga.com](http://www.nasiga.com)  
IČO: 29143268



## Spaceship

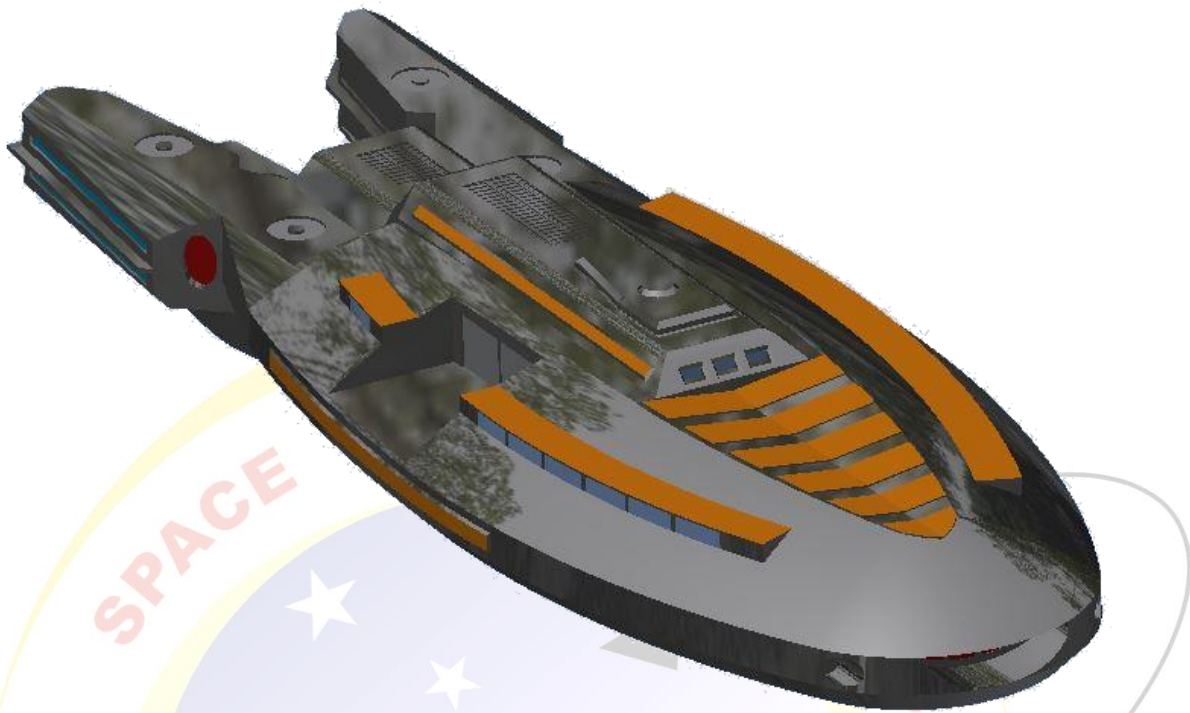


## Description

- Electromagnetic shield
- Hyper-drive propulsion
- Invisibility mode, no radar detection on low or high frequencies
- Chameleon mode – blend in with the surrounding terrain
- Auxiliary drive for movement in event horizon time continuity
- Speed: forecasted speed – 84 light-years in 1 hour of terrestrial time, calculated in 5<sup>th</sup> dimensional hyperspace as product of distance x time x speed

## Disconnectible housing

- In the case of necessity the body of the ship can be disconnected from the housing. In this status the body can operate independently as it has the independent propulsion system. The disconnected housing can operate independently to.
- The mutual accessibility between the body and the housing is secured by docking gate.
- The ship is equipped by 2 additional docking gates to park other visiting small ships.

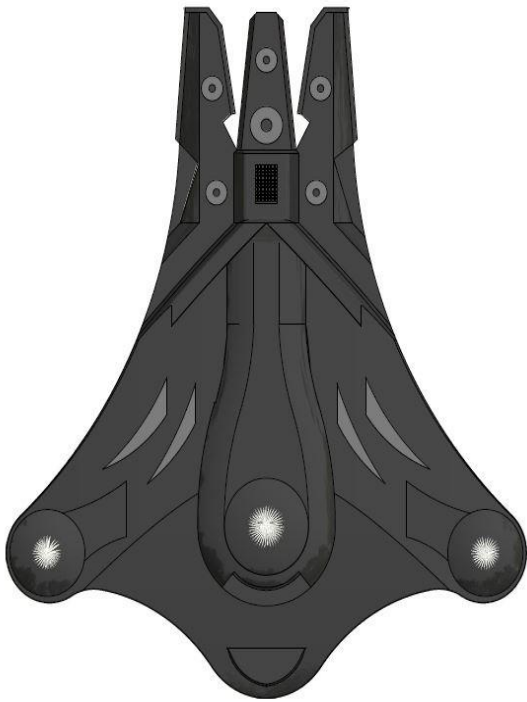
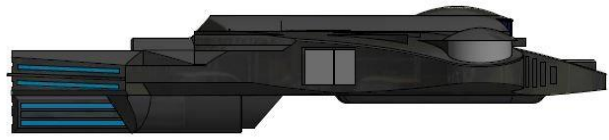


### Security and weaponry

- Shields: electromagnetic
- Weapon types: plasma, pulse, high frequency, laser, resonance

### Dimensions of the complete ship

- Length: 276 m
- Width: 240 m
- Height: 50 m



### Dimensions of the body of the ship (disconnected part)

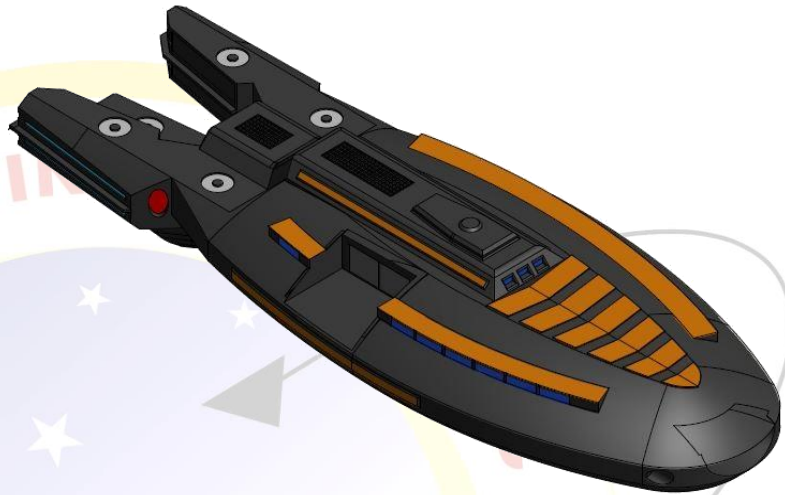
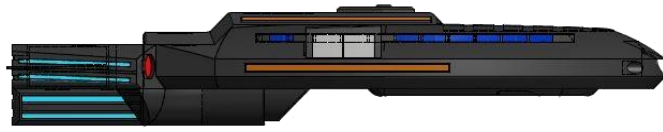
- Length: 276 m
- Width: 100 m
- Height: 49 m



NASIGA s.r.o.

U Mototechny 107  
251 62 Tehovec  
Czech Republic

E-mail: [info@nasiga.com](mailto:info@nasiga.com)  
[www.nasiga.com](http://www.nasiga.com)  
IČO: 29143268



NATIONAL

NASIGA

AGENCY